



**Reliable solutions**  
Proven quality



**SAS Power Industries**  
(A Galfar Group Company)





Power up your world with excellent-quality, custom-made products, services and solutions with SAS Power FZE.

As the region's leading full-service power company, we focus on developing, innovating, and creating efficient power automation systems, power distribution equipment and products.

We provide comprehensive solutions for all power challenges along with field-related services.

SAS Power works with leading Original Equipment Manufacturers (OEM) hailing from Europe, Japan, and North America for medium voltage switchgear, protection systems, and power automation systems.





## SAS Power Industries

As a subsidiary of the illustrious GALFAR Al Misnad company, SAS Power Industries, also known to the world as SAS Galfar, came into existence in 2005. It is our perseverance, hard-work and passion that has helped us in creating a stellar portfolio of large-scale, avant-garde assets along with auxiliary services built on the foundations of outstanding technical and business expertise.

SAS provides bespoke, competitively-priced power distribution and automation systems with related service support to clients, with agility, and perfection.

We do this all, and more, by outperforming all competitors in the zone.

Following all safety and quality protocols, we, the SAS Power team, are fulfilling all our clients' and clients' needs with a sharp focus and never-ending passion that compels us to do more, be more at all times.



# Message from Management

Since our inception, we have been clear about our goal - to be the globally preferred power and automation engineering, manufacturing plus field service partner to all leading names across the globe in the energy and water domain. To accomplish what we had set then, we are consistently working to develop and integrate the best practices in engineering, production, and research from our peers and our parent company.

So far, the journey has been nothing but insightful, eventful, and inspiring, thanks to our clients, our team, and clients for pushing us to achieve the impossible. Hopefully, we can continue working and delivering along the path and get to where we rightfully belong - The No. 1 spot.



## Vision & Values

### To provide **unrivalled technical quality**

Our keen focus on technical quality and dedication to exemplary customer service is our strength. Making it available for clients in a commercially viable and sustainable manner is what we aim for with every project.

### To invest in **excellence**

Our vision must align with on-ground work. By investing in world-class facilities in our factory and our people, in research, design, technology and tools, and collaborating with the technology partners and experts is what makes our goal achievable.







## Origin of SAS: Where it all began

SAS is proud to be associated with GALFAR group; a prestigious name set up back in 1972, known for its consistent quality and excellent work upheld across several businesses and subsidiaries.

What began as a subsidiary company under Oman based Galfar Engineering and Contracting LLC in 1995, Galfar Al Misnad has now become an undefeated force to be reckoned across industry scapes - from oil and gas to E & I, infrastructure, building and MEP plus facility management, each of the five operating divisions along with the respective specialized support units come together to make sustainable growth and wide-scale development a reality for Qatar and beyond.

Carrying the values of its parent company deep in its foundations, Galfar Al Misnad, when it became independent post-2007, began expanding its reach in the GCC with the acquisition of Galfar Kuwait in 2010, followed by Galfar SAS in 2011.

Thus began the story of SAS Power.

## The Leadership: Galfar Al Misnad

Under the leadership of our senior management team, the wide-scale industrial evolution of the Gulf region in the areas of operation has turned into reality within a short period of time.

Looking deeper into the veins of Galfar Group, the operating division heads are well-supported by the supporting division heads. The latter ensures that all project backend operational requirements are handled and completed on schedule.

They work together to plan and carry out the company's projects and activities across all divisions and subsidiaries in the most sustainable, efficient, and innovative manner possible.





## Why choose SAS Power?

### 1 - Customer satisfaction

With SAS Power, all clients are offered an extensive portfolio with a range of products, globally recognised for their strength, durability and power.

From procurement, logistics to customer service, everything is taken care of by SAS to ensure all work is completed without clients having to worry.

In the end, our clients experience the brilliance of our comprehensive product range, consistent and responsive service, and the care of a knowledgeable team that is dedicated to delivering practical and timely solutions across all stages of the work involved.

### 2 - Start-till-finish solutions by SAS specialists

The SAS product development process starts with design followed by manufacturing, then installation succeeded by complete support service to ensure top-notch maintenance at all times. SAS Power provides you complete power services and solutions to fulfil all your power automation and distribution needs across Energy and Water sectors.

Our highly skilled team of technicians, advisors and engineers have successfully managed numerous automation and electrical projects in the region, earning recommendations and laurels from seasoned specialists across the industry.

### 3 - Product excellence

- Assured quality, 100% cost-effective, safety and reliability of all products.
- Each SAS Power FZE product comes with complete compliance guarantee to all legal requirements, international standards and local statutory requirements.
- Verified design of all electrical installations with components that meet international design and safety codes.
- Rigorous design testing and material analysis of products before installation.
- Scrutiny performed at all stages of construction and installation.
- All essential approval checks and commissioning checks are completed at the installation stage.
- In-depth analysis of location that helps in the detection of conditions that could potentially lead to power failures and short circuits.

Consistent focus on innovation has resulted in the creation of a versatile list of products and services that provide the highest usability levels, open protocols, reliability, and optimized control. One can spot SAS Power Products in action across commercial infrastructures, manufacturing, generation and water treatment plants, among many other sectors.



# SAS Factory

Located in the Jazeera Al Hamra suburb, a modern developing part of Ras Al Khaimah, UAE, SAS Power boasts of state-of-the-art tools, and all modern facilities in its office, and production-cum-manufacturing space that are conveniently located under one roof. SAS Galfar premises is spread over 8000 Sq. meters with the current facility built consuming half the available space and the other half ready for future expansion. Equipped with state-of-the-art pneumatic tools, SAS Power team is composed of over 100+ trained professionals and technicians from the RAK Economic Zone in the UAE.

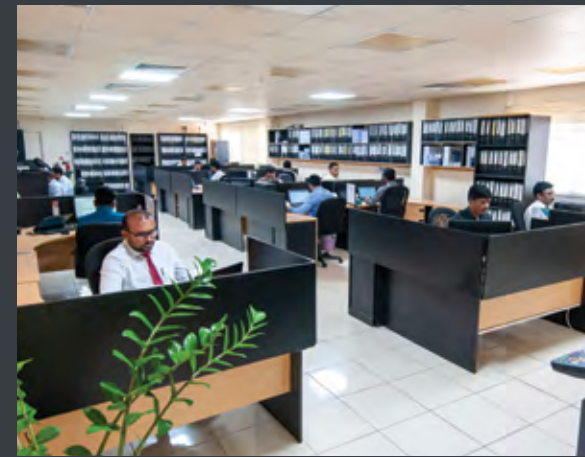
## Key Strengths

- Office headquarters with manufacturing and production space located nearby for efficient operations and management.
- Dedicated areas that facilitate full-scale production, design, research and development, and complex assembly. The assembly division allows simultaneous construction of over 300 cubicles at any given time.
- Versatile testing facilities, avant-garde pneumatic tools, and other dynamic equipment available at the factory.
- A trained and proficient workforce, hand-picked from different parts of the world.



Office - Factory Built-up Area **8,000** sq.mt.

The assembly division allows simultaneous construction of over **300** cubicles at any given time





## SAS Products & System Portfolio

# Low Voltage Switchgear

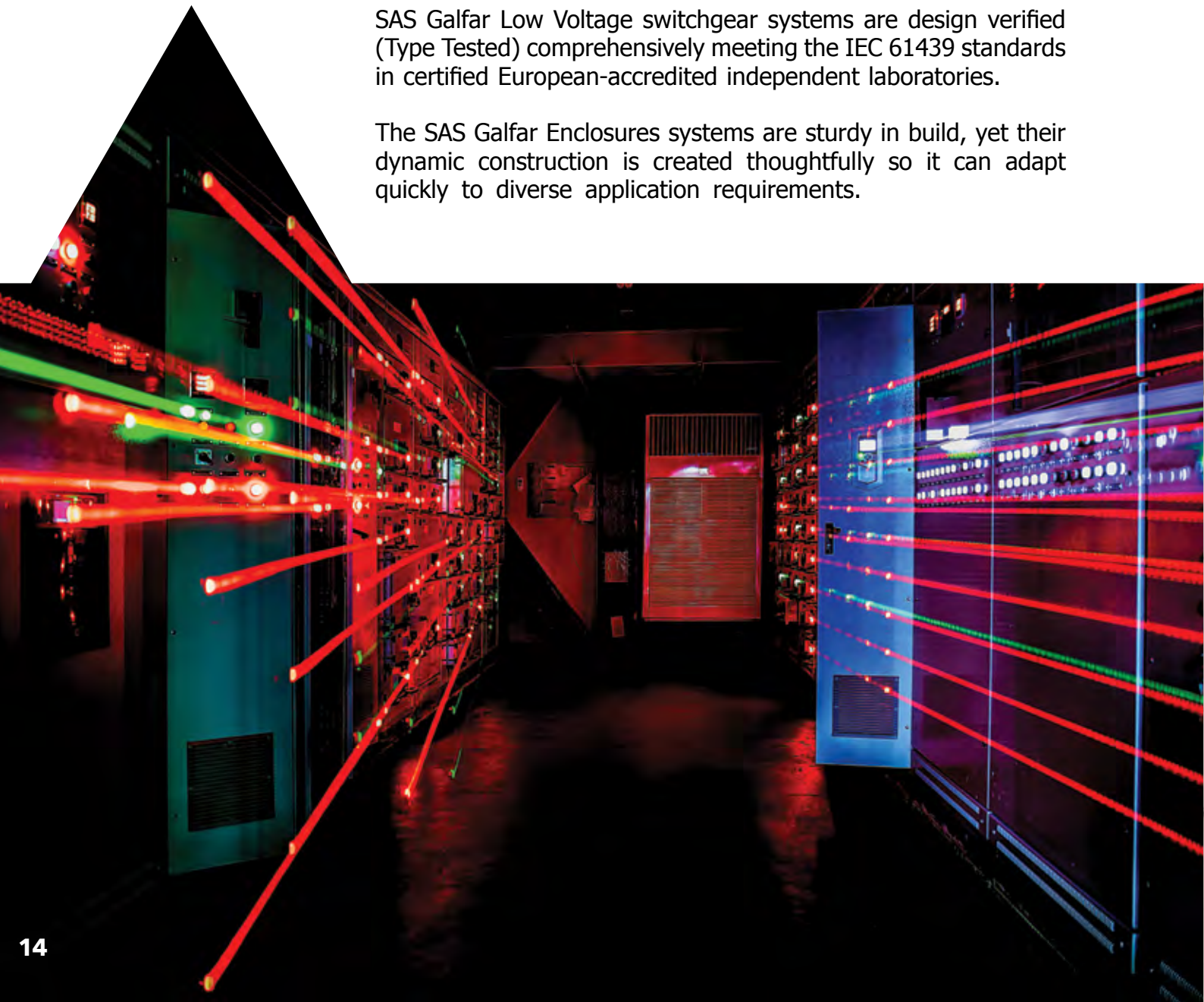
(Assemblies rated up to, and including 1000 V AC and 1500 V DC)

From design, engineering, assembly to testing and installation, each part of the LV Switchgear is crafted and put together at the SAS facility.

The SAS LV switchboard designs are developed in-house by experienced professionals and technicians. They ensure that all statutory and mandatory processes are followed, which meet the International standards and the regulations set in place by local and regional authorities.

SAS Galfar Low Voltage switchgear systems are design verified (Type Tested) comprehensively meeting the IEC 61439 standards in certified European-accredited independent laboratories.

The SAS Galfar Enclosures systems are sturdy in build, yet their dynamic construction is created thoughtfully so it can adapt quickly to diverse application requirements.



## SAS Products & System Portfolio

# Medium Voltage Switchgear

(For voltages exceeding 1000 volts up to, and including 33 000 volts)

More complex than their lower voltage counterparts in both construction and operation, the SAS MV Power Switchgear falls in line with the requirements of the latest IEC and IEEE standards. The SAS design and technicians team possess the talent and skills to introduce the right fit for increased asset life, thus protecting the operations personnel by limiting any chances of injuries or accidents.

The design + technicians team carefully selects the right components in terms of functionality, accuracy, appropriate ranges, current and voltage transformer sizing, protection relay settings, all based on the system data while addressing operation philosophy, sequence of switching, interlocks, and maintenance work.





## SAS Products & System Portfolio

# Local Control Centers (LCC) for Gas Insulated Switchgear

LCC performs a significant role in substations with all the critical functions required to operate and maintain the GIS.

Gas Insulated Switchgear (GIS) are employed in indoor transmission substations. They constitute switching devices and instrument transformers placed inside airtight chambers filled with inert gas to achieve the desired dielectric strength compactly. The controls of such devices are provided in panels positioned as close as possible to the GIS.

The LCC works in a decentralized strategy - each bay is provided with a dedicated panel. These panels consist of the conventional control, measuring and monitoring components with interlocks between the switching devices and the bay control unit (part of the substation control & monitoring system - SCMS), thus allowing the backup to ensure efficient power flow.



## SAS Products & System Portfolio

# Control, Protection and Substation Automation

Switchgear protection is necessary for any system providing power to electrical loads. Protection can be built into a switching device, an external relay that swiftly identifies abnormalities in a power system and initiates tripping of the associated switching device.

Then, it must detect and isolate the faulty part of the network with minimum or no damage while ensuring that bad disconnections are avoided, thus requiring them to be accurate, fast-acting, and selective.

Control and protective equipment are needed everywhere in the power system setup. It is predominantly used in switchgears exceeding 1000 volts and goes up to ultra-high voltage.





# Automation Project

Water: switching, control & instrumentation to facilitate optimal use of Water through recirculation, desalination, irrigation, district cooling and treatment that are all process-based applications related to efficient use of water.

Oil and Gas: control and operation of higher power motors are put into practice utilizing medium voltage starters and soft starters or variable frequency drives. The control, protection, monitoring and measurements work like it is in the lower voltage range.

Across oil and gas industries as well as water and energy, the SAS switching control and instrumentation system help put together all process-based applications into effect.

Process control, instrumentation, measurement, and monitoring of the electrical system associated with the above applications need versatile products, avant-garde resources, and experience.

# SAS Services

Site measurements plus power studies, related analysis, and subsequent maintenance are essential to maintain a smooth and clean power supply. It may start from simple methods of proficient load management or filtering, passive or active; the solutions needed to fulfill the aforementioned goal are numerous. SAS Power takes pride in providing expert services to solve all power-related challenges, which sets the ground for power to function optimally.

## Engineering Services

- Power quality - harmonic calculation and recommendation of filter sizing
- Technical studies - use of conventional calculations and time-proven software to determine the appropriate values used in the configurations and settings to be adopted
- Retrofit, annual & preventive maintenance - perform upgradation, repair, replacement and maintenance works on planned shutdowns on extremely short durations to keep the plant interruptions to the minimum





## Technical Studies

- Short circuit analysis
- Protection discrimination & coordination
- Power factor correction
- Heat load Calculation
- Arc Flash analysis
- Lightning protection
- CT/ VT calculations and sizing
- Battery sizing
- Relay setting calculations

## Retrofit, Annual & Preventive Maintenance

- Teams available on call 24x7, for all service and maintenance requirements
- Protection modifications - replacement of old or obsolete protections
- Modifications - remote end old main1 and main 2 line protections replacement with new relays
- Replacement of LV capacitor banks
- LV Circuit breakers replacements for enhanced capacity

## Miscellaneous Services

- Designing, assembly, testing, and commissioning of fault monitoring systems
- Designing, assembly, and testing of automatic voltage regulator for transformers
- Create remote telemetry unit panels for power and water applications
- Create control panels for motor controls employing soft starters, variable frequency drives
- Create SCMS/SCADA panels
- All-inclusive training (classroom and on-field) on usage, compliance, operations related to our entire range of products and activities

# QHSE & Safety Policy

SAS POWER INDUSTRIES FZE is committed to sustainable development by balancing social, environmental and economic considerations while managing its businesses.

SAS strives to follow all protocols associated with maintaining optimum Quality Health Safety and Environment (QHSE) standards.

It promises to follow the best system standards of ISO 9001:2015, ISO 14001:2015, and ISO 45001:2018 in all its operations, thus contributing to the overall betterment of employees, communities, and other stakeholders.

SAS is actively working on creating an accident-free workplace, and implementing all safety practices.







## SAS Team

Every SAS member, fueled with hard work and motivation, is routinely working to ensure brilliant product quality and excellent services are served at all times to every client.

From managing operations to working towards sustainable solutions, and consistently working to develop cutting-edge innovation, our team's efforts have led to SAS Power growing steadily through the years.



## Certifications & Approvals

SAS Power FZE is accredited by Veritas Assurance International, a globally recognized certification authority that issues internationally recognised accredited certifications to enterprises that commit to and comply with the applicable Standard standards.

SAS Power is ISO 9001, ISO 14001, and ISO 45001 accredited for Quality Management System, Environmental Management System, and Occupational Health and Safety Management System respectively.







# Strategic Technology Partners

## LV Switchgear - ABB

- SAS Power has been ABB's authorized channel since 2006.
- SAS is the authorized channel for ABB to assemble ArTu-K Low voltage switchgear and products in UAE.
- SAS Power's type tested panels from 250A up to 3200A are well accepted in all utilities in the region, and type tested with ABB Europe-made components.
- SAS Power's type tested panels have been supplied to more than 75 Substations of DEW

## Principals & Technology Partners

Low Voltage Switchgear



Medium Voltage Switchgear



Control, Protection and Substation Automation



Local Control Centers (LCC)



Automation

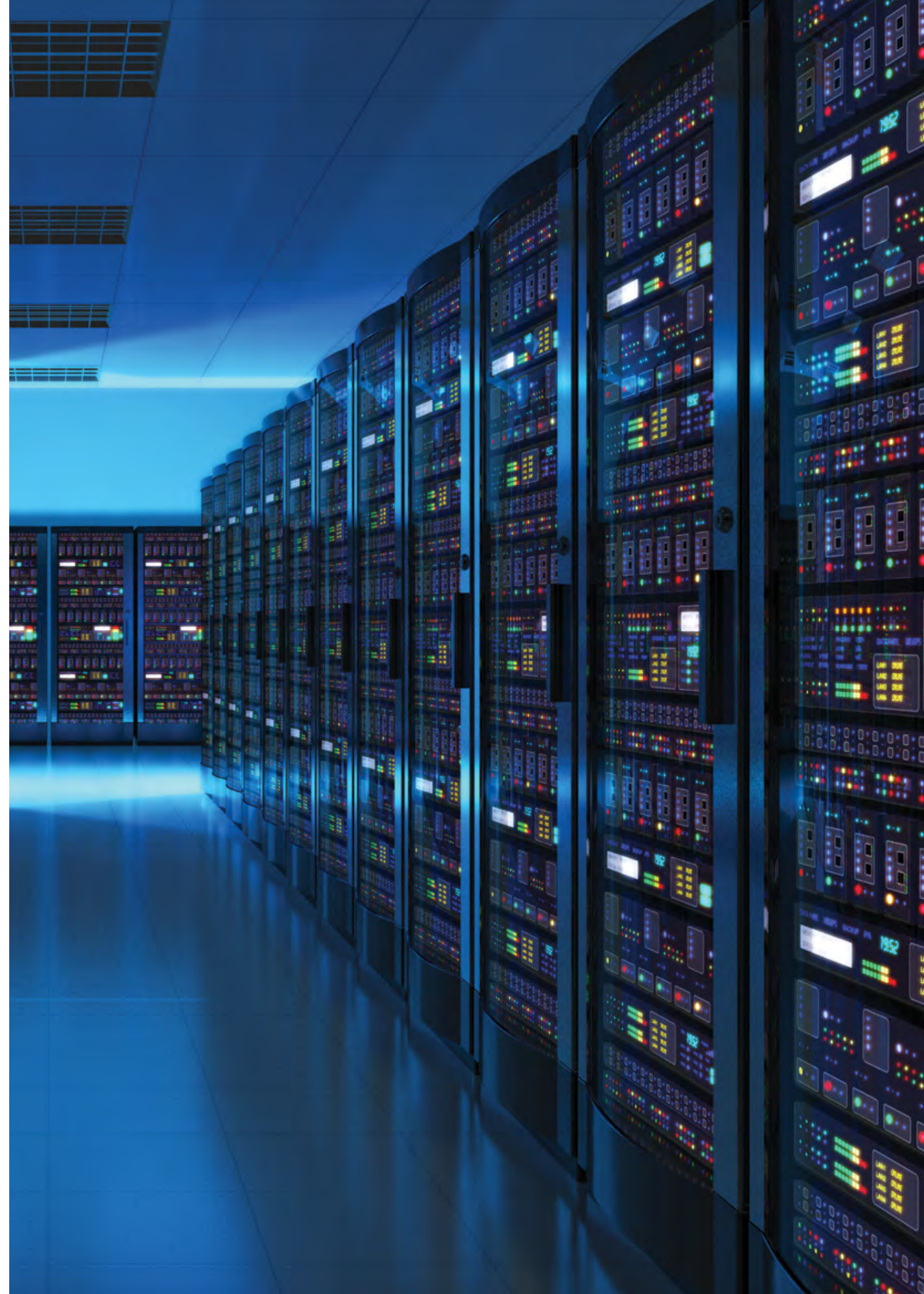


# SAS Departments

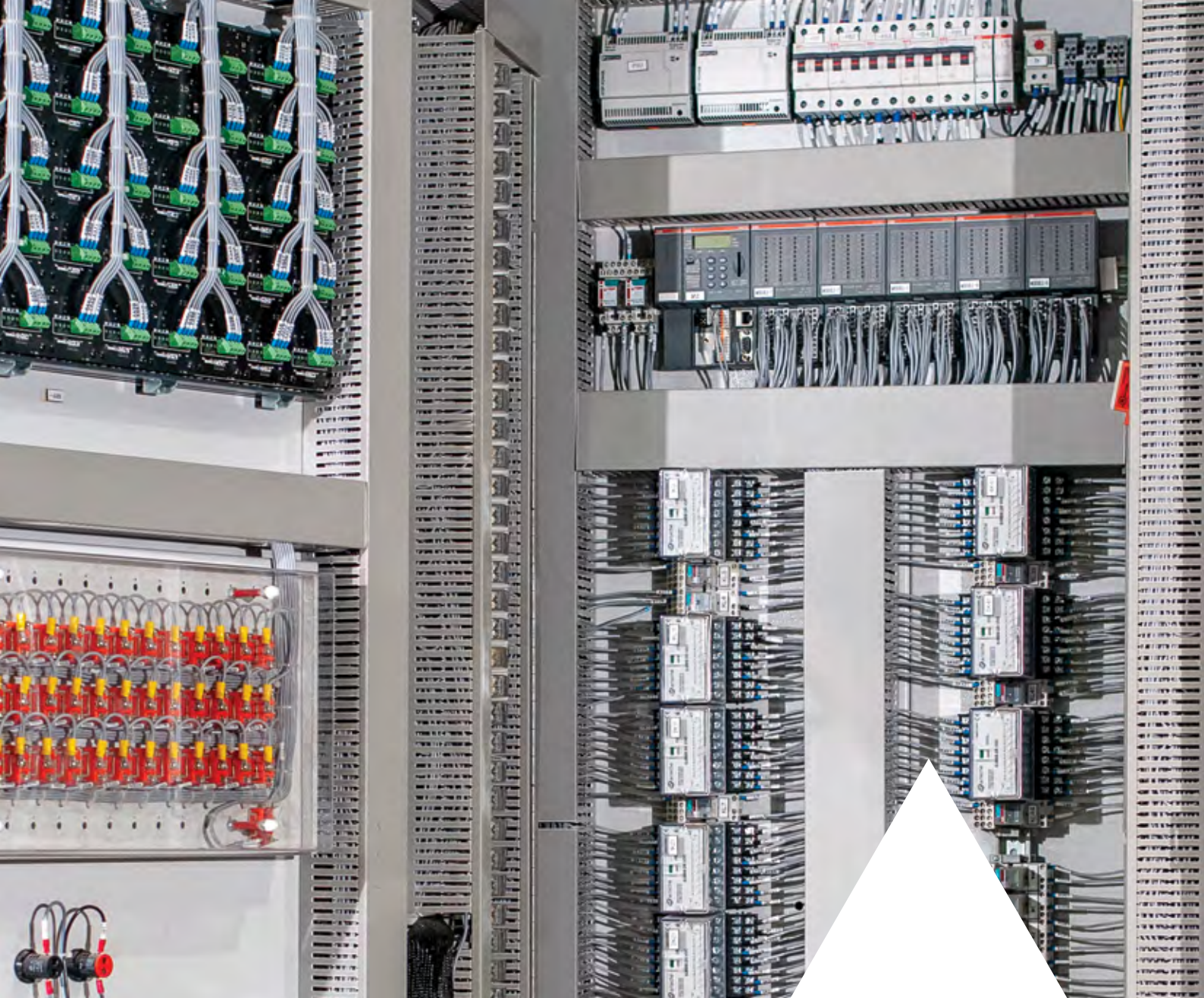
- Sales and Marketing
- Finance, Administration and HR
- Engineering Project Management, Procurement, and Logistics
- Production
- Quality & Testing



# Our Clients







## SAS Power Industries (A Galfar Group Company)

Plot 8, Technology Park, P.O. Box 54505,  
RAK Economic Zone, Ras Al Khaimah, UAE  
email: [info@saspower.com](mailto:info@saspower.com)  
Ph: +971 7 2447278 Fax: +971 7 2447689

[www.saspower.com](http://www.saspower.com)